



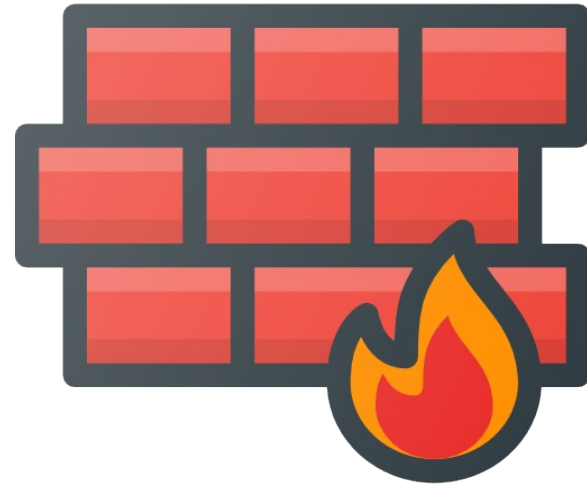
Pfsense Alta disponibilidad

Firewall, Enrutado, VPN ...

¿Que es pfsense?

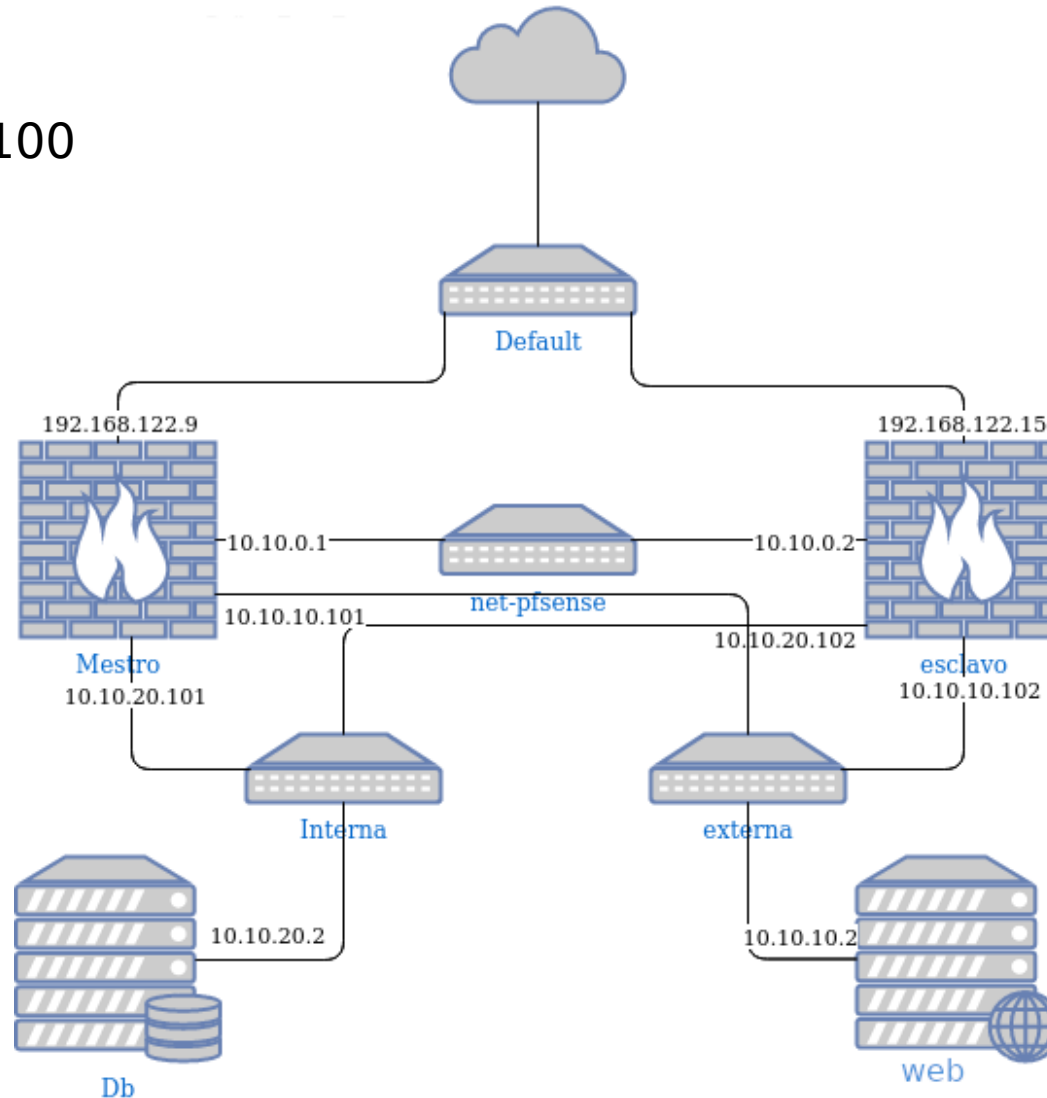


+

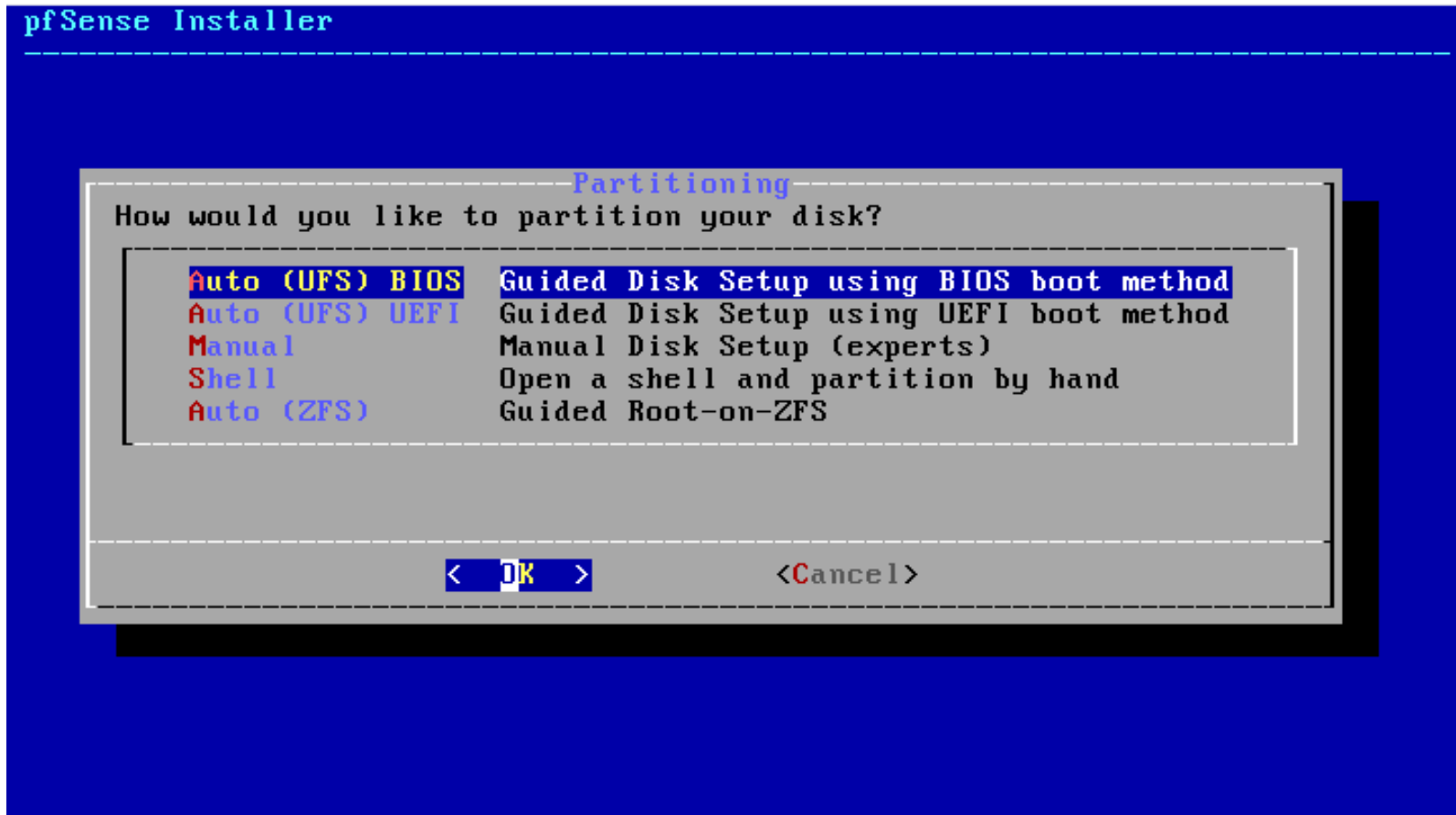


Escenario

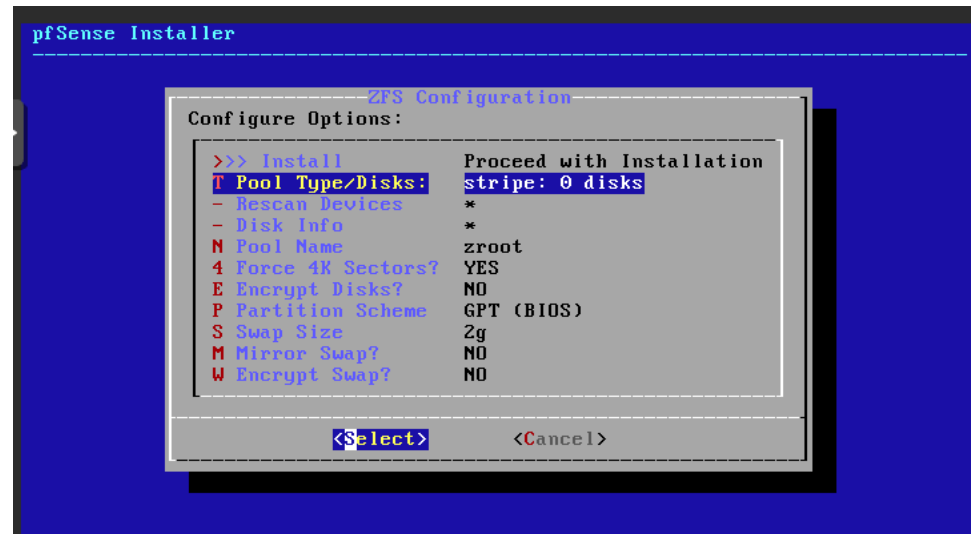
Virtual IP:
Default: 192.168.122.100
Interna: 10.10.20.100
Externa: 10.10.10.100



Instalación



Instalación



Instalación

```
0) Logout (SSH only)
1) Assign Interfaces
2) Set interface(s) IP address
3) Reset webConfigurator password
4) Reset to factory defaults
5) Reboot system
6) Halt system
7) Ping host
8) Shell
9) pfTop
10) Filter Logs
11) Restart webConfigurator
12) PHP shell + pfSense tools
13) Update from console
14) Disable Secure Shell (sshd)
15) Restore recent configuration
16) Restart PHP-FPM

Enter an option: █
```

¿Lo probamos?